

Maternity and Neonatal Update

Wiltshire Health Select Committee

Jan 18th 2023



Bath & North East Somerset, Swindon and Wiltshire

LMNS

Local Maternity &
Neonatal System (LMNS)



BSW Local Maternity and Neonatal System

The Local Maternity and Neonatal is a partnership of organisations, women and families working together to deliver improvements in maternity and neonatal services in Bath and North East Somerset, Swindon and Wiltshire.

Includes midwives, obstetricians, service users, neonatal staff, managers, health visitors, commissioners, public health, educators, perinatal mental health providers and GP's

ICB arm for Safety and Quality in Maternity and Neonatal Services

Our LMNS Vision is for all women to have a safe and positive birth and maternity experience and to be prepared to approach parenting with confidence.



Bath & North East Somerset, Swindon and Wiltshire

LMNS
Local Maternity &
Neonatal System (LMNS)



Bath & North East Somerset, Swindon and Wiltshire

Maternity Voices Partnership Plus

Working in partnership to improve maternity services

What do we know about BSW mothers and babies?

- In 2020/21 there were 10,356 births across BSW with 10,311 people giving birth.



The rate of teenage pregnancies in BSW, at 2.2% is below the UK average of 2.8%.

The rate of pregnancies to women over the age of 40 is below national average of 4.6% at 4.3%

Population characteristics by Clinical Commissioning Group (England), Health Board (Scotland and Wales), Local Commissioning Group (Northern Ireland), and Crown Dependency- (MBRRACE, 2020 data), published Oct 2022

Clinical Commissioning Group	Asian or Asian British [§]	Black or Black British [§]	Mother's age <20 years [§]	Mother's age >39 years [§]	Top quintile of child poverty [§]	Multiple birth [§]	Born at 24 to 31 weeks [§]
Bath and North East Somerset, Swindon and Wiltshire	5.7	2.4	2.1	4.1	6.2	3.1	0.9

The shading in Table 50 represents the quintiles of all commissioning organisations:

- **5th quintile:** highest 20% of commissioning organisations;
- **4th quintile**
- **3rd quintile**
- **2nd quintile**
- **1st quintile:** lowest 20% of commissioning organisations.

Rectangular Snip



Ethnicity and outcomes in the UK

- Fewer babies from ethnic minority groups were born in BSW compared to UK average.
- GWH 19.2%
- SFT 9.2%
- RUH 5.3%
- In 2019 stillbirth rate in BSW below the national average of 3.3% in England.
- In the UK stillbirth rates are more than twice as high for babies of Black and Black British ethnicity.
- Neonatal death rates are 43% higher for these groups of babies in UK
- Stillbirths and neonatal death rates are almost 3 times higher for babies of Asian and Asian British ethnicity in UK



Deprivation



Swindon has the highest proportion of births in the most deprived area in BSW with 12 neighbourhoods in the most deprived deciles.

Table 1: Breakdown of proportion of births by level of deprivation in BSW.

Area	% of births in most deprived area	% of births in least deprived area
UK average	20%	20%
RUH	3.3%	31.7%
SFT	2.6%	40%
GWH	7.7%	30.6%



- **Smoking in pregnancy** is higher among white women and younger parents under 25.
- At the time of birth
- 1 in 15 new mother smoke in BaNES
- 1 in 10 in Wiltshire
- 1 in 9 in Swindon

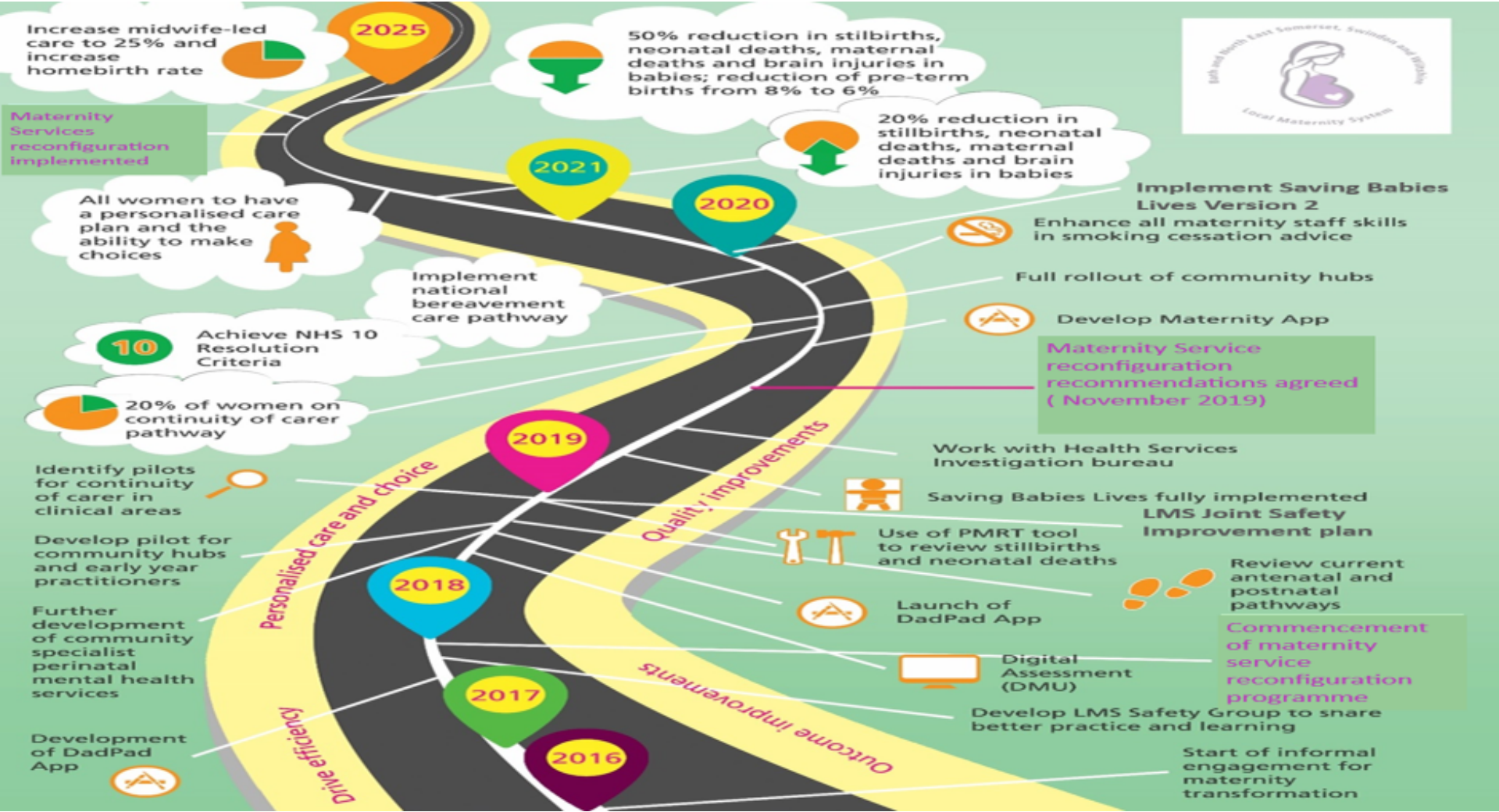
- **Pre-term Births**

Challenge to work out percentage for national target as babies under 27 weeks are transferred to tertiary unit

National target to reduce to below 6%



2018 Maternity Transformation Road Map

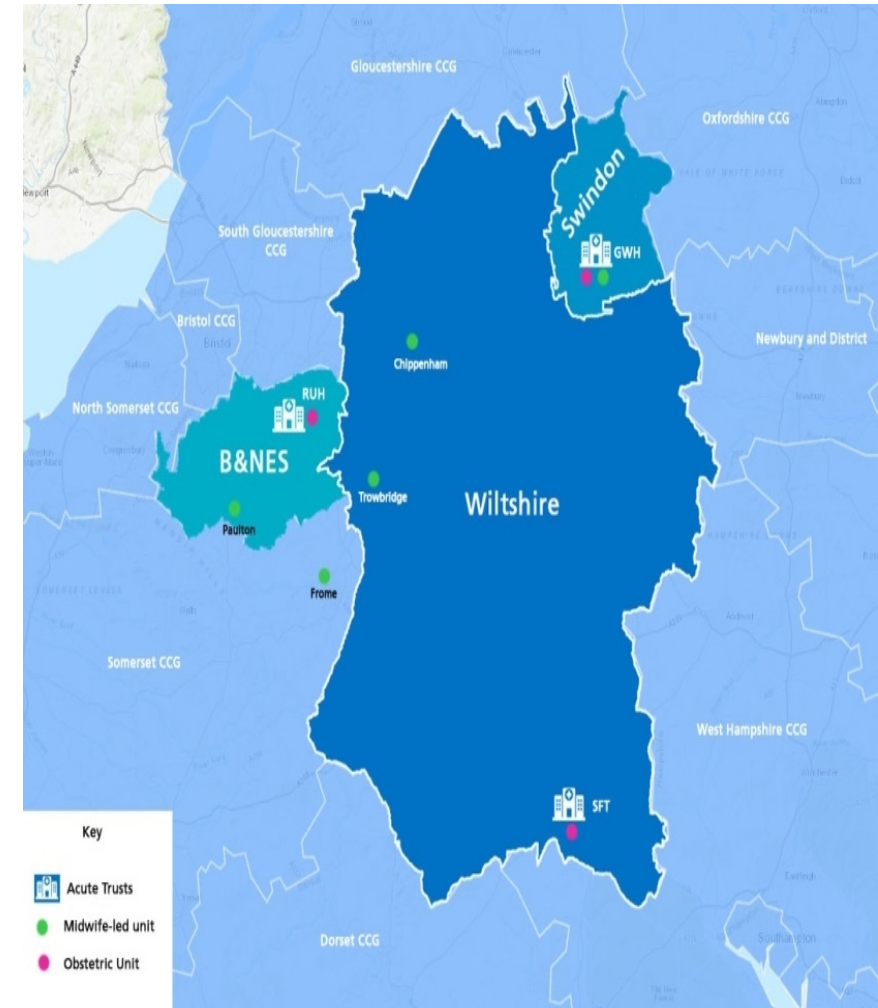


Service Redesign

2019 Maternity Services Redesign to provide women with parity of access and choice of place of place of birth.

Planned provision

- Two rather than four freestanding midwifery units (FMU) providing intrapartum care as well as antenatal and postnatal care
- Antenatal and postnatal care to continue in all current geographical locations in a 'hub' model
- Create two further alongside midwifery units (AMU) in Bath and Swindon to mirror the service already provided in Swindon
- Three acute obstetric units will continue in Bath, Swindon and Salisbury providing obstetric and neonatal services
- Improve and promote homebirth
- Postnatal support closer to home rather than community postnatal bed model



Current Position

- Salisbury Alongside Midwifery Unit opened 28th October 2022 providing women with choice of home, obstetric unit and midwife led birth environments in all three areas of BSW
- RUH birth unit and upgrade of Antenatal Day Assessment Unit design plans drawn up – National capital funding sources will be required



Community Hubs

- Pilot maternity hub set up in Millstream – central Salisbury area. Other temporary and pilot hubs in Swindon and BaNES area
- ICB models of care being developed – will be linked to maternity pathway and learning from pilot sites

Transforming Maternity Services Together **NHS**

Our recommendations for change







 Bath and North East Somerset, Swindon & Wiltshire
Local Maternity System

COVID pandemic impacts

Focus on continued provision of maternity and neonatal services during COVID pandemic with modifications to reduce spread of infection

- Included some changes to pathway for face to face meetings where appropriate
- Increased use of technology to support consultations
- Focus on reducing inequalities in outcomes for pregnant women from minority ethnicities and babies from COVID infection
- Resumption of pathways in maternity and neonatal but remaining challenge due to impact on workforce by ongoing COVID infections

Did you know recent studies show Black women are eight times more likely and Asian women are four times more likely to be admitted to hospital with COVID-19 during pregnancy than white women.

We are here for you	We will work with you to provide consistent and personalised care throughout your pregnancy	You will be offered additional telephone consultations and support from your midwife	
What can you do?	It is recommended that you take 10mcg of Vitamin D daily. Speak to your pharmacist or midwife if you have any concerns. Your midwife can support you to access healthy start vitamins	If you have a BMI or over 30 it is recommended to increase your folate intake. You can speak to your pharmacist, midwife or GP about this.	
	Please do not hesitate to contact your maternity unit if you notice any changes in your baby's movement or if you have any concerns or worries at all about your health or your baby's.	Contact NHS 111 if you have any symptoms of COVID-19 and tell your local maternity unit/midwife if you test positive.	

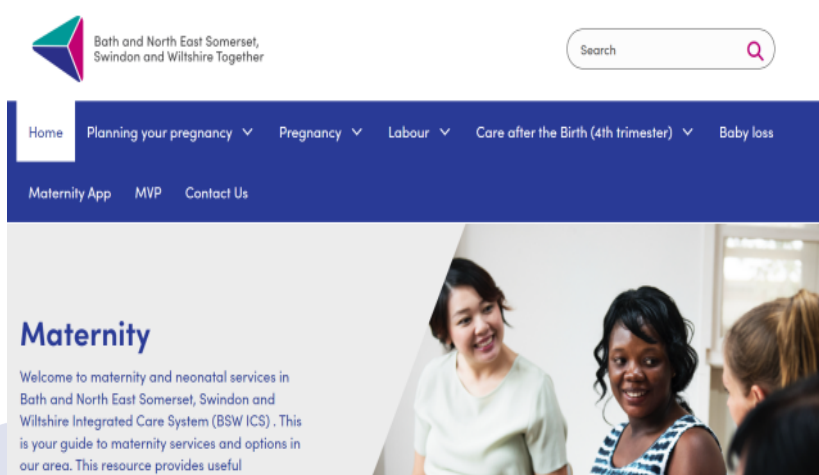
Continuity of Carer

- Initial plan to rollout Continuity of Carer models of care across all maternity services by 2022
- All services had between 1- 4 teams in place prior to COVID pandemic.
- Ockenden Report recommendation in 2022 to risk assess due to staffing challenges – currently only GWH has 1 team running – Plans in place to recommence implementation when workforce levels improve (national shortage of midwives)
- Workforce workstream focusing on career development pathways to “grow our own local BSW workforce with wide range of recruitment and retention initiatives
- Models focusing initially on areas of deprivation and those with inequalities in health care outcomes



Informed choice and personalised care

- BSW Together Maternity website established – continued work to ensure relevant for women and families needs.
- www.bswtogether.or.uk/maternity
- My Care Hub app- Pilot in progress to support women with informed choice, access to information and sharing of maternity electronic records as part of integrated care records



Equity and Equality – reducing inequalities in outcomes

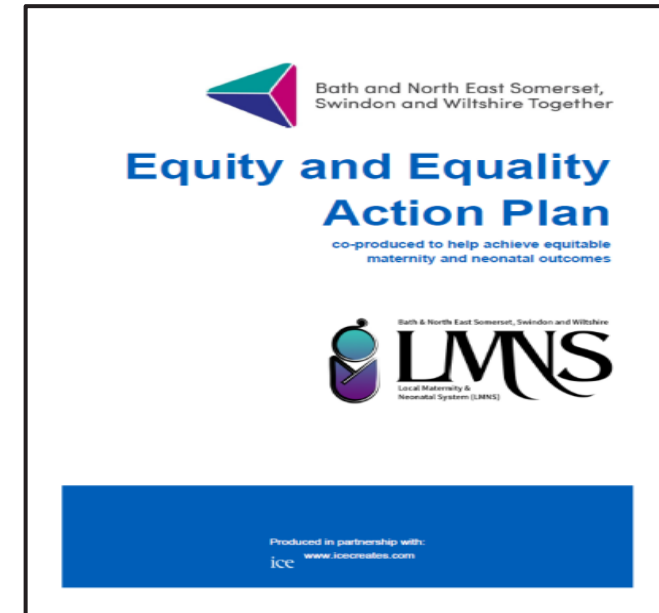
- LMNS Equity needs Analysis and Community Asset mapping 2021
- BSW LMNS Equity and Equality Action Plan formulated in 2022

Plan details the rationale for the four key areas of focus and how these map onto the five key national priorities and the steps that will be taken to address them

Areas of focus

1. Improve data collection to better understand local needs
2. Language and communication
3. Accessibility to maternity services
4. Race equality among maternity and neonatal staff

Links in with BSW Inequalities strategy and Core20 +5



Transformation -Long Term Plan for Health projects in maternity and neonatal services

- Provision of maternal mental health services –psychological interventions for birth trauma, grief and loss and fear of pregnancy



- Treating tobacco dependency and increasing the numbers of smoke free pregnancies and homes

- Perinatal Pelvic Health Services to support optimal pelvic health to reduce adverse health outcomes for women
- Provision of Continuous blood glucose monitoring for pregnant women with type 1 diabetes – reducing separation of mothers and babies by reducing neonatal admissions

Safety and Quality in Maternity and Neonatal Services

- **Perinatal Quality**

Surveillance reviewing women and babies outcomes.

Reporting as a system into SW and national reporting mechanisms to benchmark and support early identification of any issues

- LMNS safety group review of key safety and quality metrics
- Pilot of Independent Advocate role planned (Ockenden)

- Oversight of national reports and providers responses including Ockenden reports and Reading the Signals report
- Variety of quality improvement projects in maternity and neonatal services including:
 - PERIprem – optimisation of pre term baby outcomes
 - Early identification of deterioration in mothers and babies

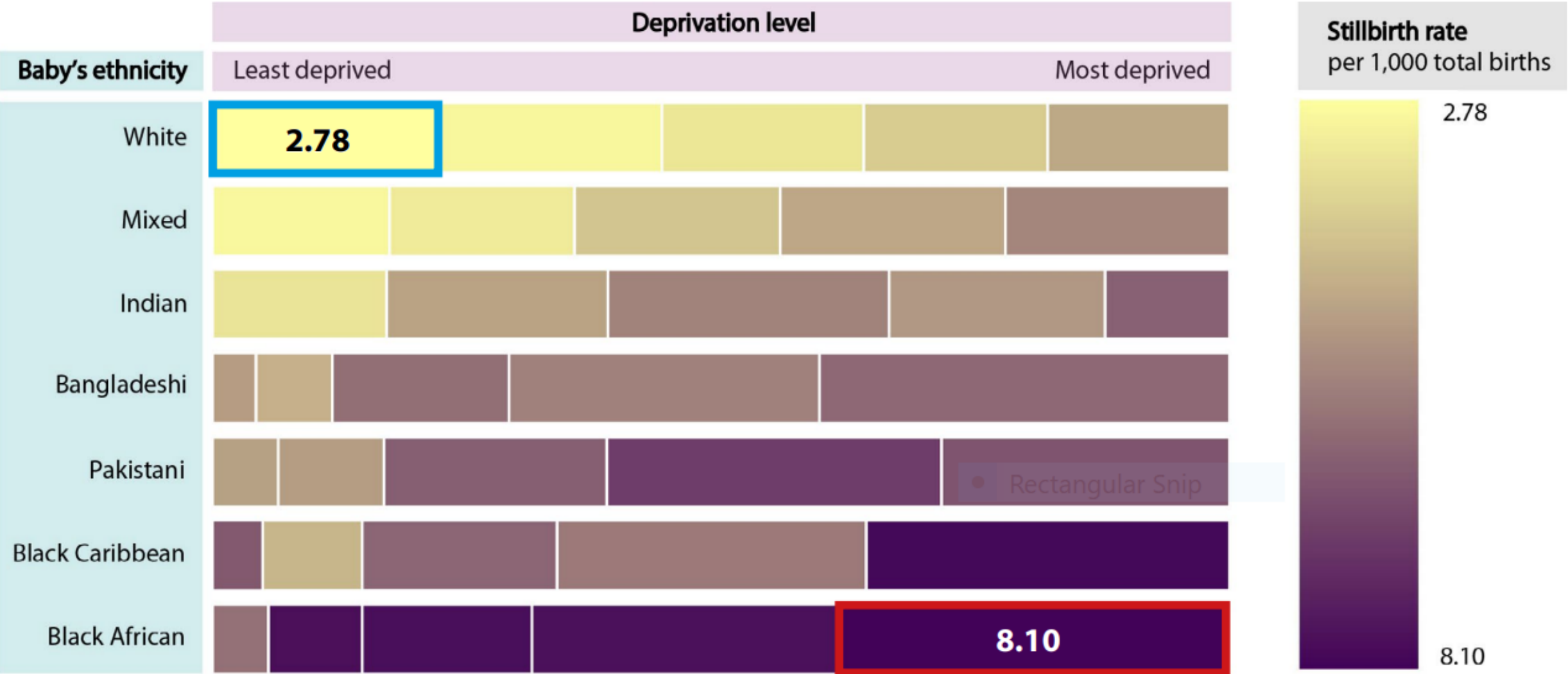


Final slide

Any questions?



Impact of ethnicity and deprivation on stillbirths in UK



Impact of ethnicity and deprivation on Neonatal Deaths UK

